

**MANDATORY DISCLOSURE  
2023-2024**



**Submitted by**

**Udaya School of Engineering**

Udaya Nagar, Vellamadi, Ammandivilai Post,  
Kanyakumari Dist, Tamil Nadu– 629 204

## Contents

Sl.No	Particulars
I	Name of the Institution
II	Name & Address of the Director
III	Name of the Affiliating University
IV	<b>Governance:</b>
	* Governing Body
	* Academic Advisory Body
	* Details of body meetings
V	* Organizational Chart
	* Name of the programmes approved by AICTE
	* Name of the Programmes accredited by AICTE
VI	* Details of Programmes
	<b>Faculty:</b>
	* Branch Wise faculty members
VII	* Number of faculty employed and left during the last three years
	* Profile of principal and faculties
VIII	* Details of fee as approved by state fee committee
	* Scholarship details
	* Hostel fee details
IX	<b>Admission:</b>
	* No of seats sanctioned
	* No of students admitted
	* No of applications received during last two years for admission
X	Admission procedure
XI	Criteria and Weightages for Admission
XII	Results of admission under Management seats / Vacant Seats
XIII	Information on Infrastructure and other Resources available
	* Library

## **MANDATORY DISCLOSURE**

**I. Name of the Institution** : **UDAYA SCHOOL OF ENGINEERING**  
UDAYA NAGAR, VELLAMADI,  
AMMANDIVILAI POST – 629204,  
KANYAKUMARI DISTRICT.

Telephone Number : 04651-239900, 239901

Fax Number : 04651-239903

E-mail : [978udayaengineering@gmail.com](mailto:978udayaengineering@gmail.com)

**II. Name and address of  
the Principal** : **Dr.S.Jothibas,**  
Udaya School of Engineering,  
Udaya Nagar, Vellamadi,  
Ammandivilai Post – 629204,  
Kanyakumari District.

Telephone Number : 04651-239900, 239901

Fax Number : 04651-239903

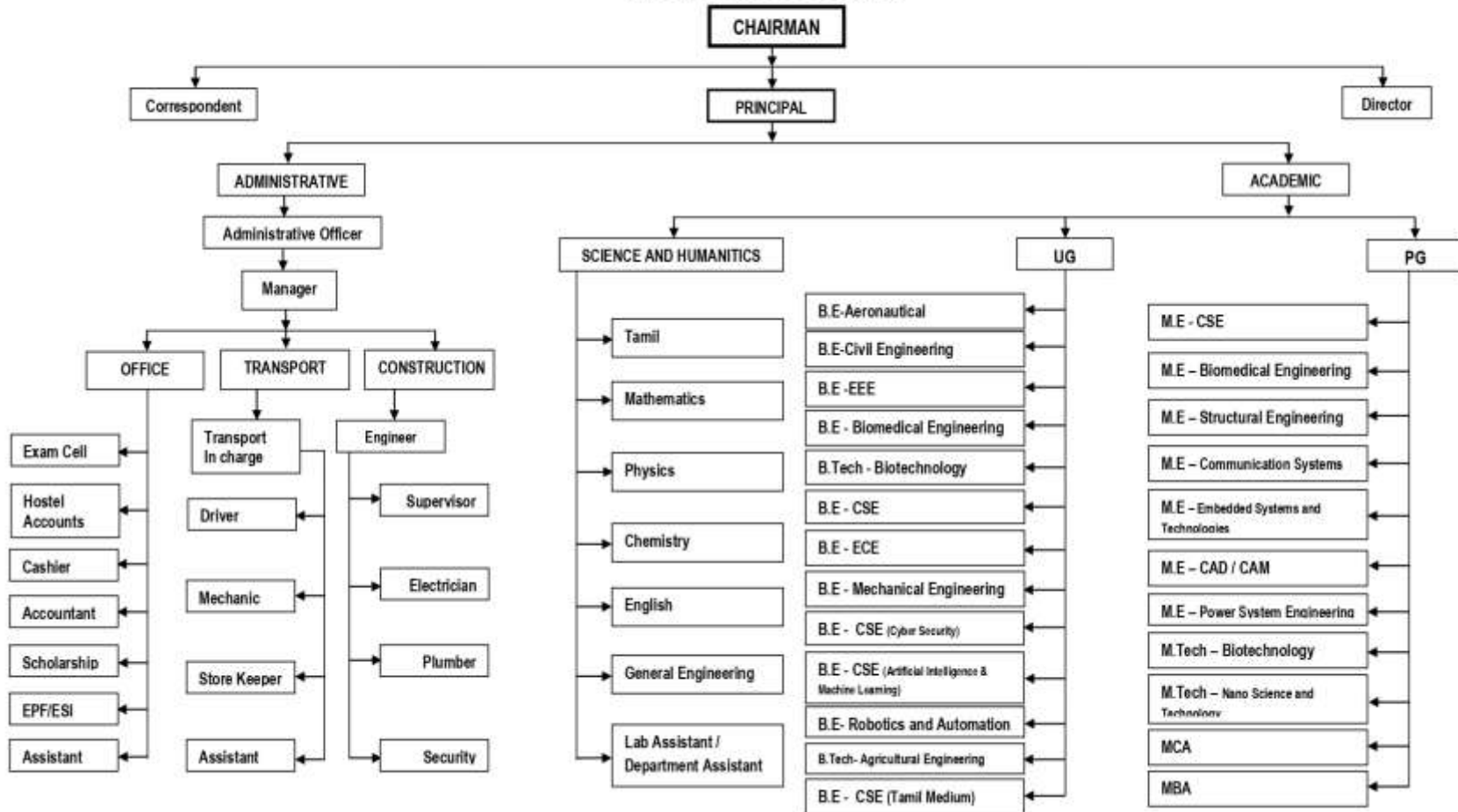
E-mail : [udayajbonline@gmail.com](mailto:udayajbonline@gmail.com)

**III. Name of the Affiliating  
University** : **Anna University, Chennai**

# UDAYA SCHOOL OF ENGINEERING

Udaya Nagar, Vellamadi Junction  
Ammandivilai, Kanyakumari District – 629204

## ORGANIZATIONAL CHART



#### IV. GOVERNANCE:

<b>Sl.No</b>	<b>Name</b>	<b>Designation</b>	<b>Phone Number</b>	<b>Email ID</b>
1.	Er.C.Thayaparan	Chairman	9443358902	<a href="mailto:udayachairman@gmail.com">udayachairman@gmail.com</a>
2.	Dr. A. C. T. Arjun Singh	Member	8903603699	<a href="mailto:arjunsinghthayaparan@gmail.com">arjunsinghthayaparan@gmail.com</a>
3.	Ms.A.C.T.Udaya	Member	7708282172	<a href="mailto:978udayaengineering@gmail.com">978udayaengineering@gmail.com</a>
4.	Mrs. Parvathy	Member	9281090006	<a href="mailto:978udayaengineering@gmail.com">978udayaengineering@gmail.com</a>

## V. PROGRAMMES

- **Name of the Programmes approved by the AICTE**

<b>Sl.No</b>	<b>Name of the Programmes approved by AICTE</b>	<b>Number of Seats</b>	<b>Duration</b>
1.	B.E - Bio-Medical Engineering	60	4-years
2.	B.Tech - Bio-Technology	60	4-years
3.	B.E - Electrical and Electronics Engineering	60	4-years
4.	B.E - Electronics and Communication Engineering	60	4-years
5.	B.E - Computer science and Engineering	60	4-years
6.	B.E - Computer science and Engineering (Artificial Intelligence and Machine Learning)	30	4-years
7.	B.E - Computer science and Engineering (Cyber Security)	30	4-years
8.	B.E – Robotics and Automation	30	4-years
9.	B.E - Mechanical Engineering	90	4-years
10.	B.E- Civil Engineering	60	4-years
11.	B.E- Aeronautical Engineering	60	4-years
12.	B.Tech – Agricultural Engineering	60	4-years
13.	M.E - Embedded Systems	18	2-years
14.	M.E – CAD / CAM	18	2-years
15.	M.E – Computer Science and Engineering	18	2-years
16.	M.E – Biomedical Engineering	18	2-years
17.	M.E – Power Systems Engineering	18	2-years
18.	M.E – Communications Engineering	18	2-years
19.	M.E – Structural Engineering	18	2-years
20.	M.Tech – Biotechnology	18	2-years
21.	M.Tech – Nano Science and Technology	18	2-years
22.	Master of Computer Applications	60	3-years
23.	Master of Business Administration	60	2-years

- Name of the Programmes accredited by the AICTE

**Not Applicable**

- Cut off mark / Rank for Admission during the last three years

**Year: 2022-2013**

S.No	Course	Max cut off (200)	Min cut off
1	B.E - Bio-Medical Engineering	180.50	120.00
2	B.Tech - Bio-Technology	185.50	115.00
3	B.E - Electrical and Electronics Engineering	150.50	100.00
4	B.E - Electronics and Communication Engineering	120.50	85.25
5	B.E - Computer science and Engineering	195.60	105.50
6	B.E - Mechanical Engineering	175.50	92.00
7	B.E- Civil Engineering	150.00	93.00
8	B.E- Aeronautical Engineering	145.00	120.00
9	B.Tech –Agricultural Engineering	140.00	110.00
10	B.E - Computer science and Engineering (Artificial Intelligence and Machine Learning)	150.00	120.00
11	B.E - Computer science and Engineering (Cyber Security)	145.00	115.00
12	B.E – Robotics and Automation	147.00	118.00

**Year: 2021-2012**

S.No	Course	Max cut off (200)	Min cut off
1	B.E - Bio-Medical Engineering	180.50	90.00
2	B.Tech - Bio-Technology	185.50	115.00
3	B.E - Electrical and Electronics Engineering	150.50	100.00
4	B.E - Electronics and Communication Engineering	120.50	85.25
5	B.E - Computer science and Engineering	195.60	105.50
6	B.E - Mechanical Engineering	175.50	92.00
7	B.E- Civil Engineering	150.00	93.00
8	B.E- Aeronautical Engineering	145.00	120.00

**Year: 2020-2011**

<b>S.No</b>	<b>Course</b>	<b>Max cut off (200)</b>	<b>Min cut off</b>
1	B.E - Bio-Medical Engineering	184.50	89.00
2	B.Tech - Bio-Technology	188.50	110.00
3	B.E - Electrical and Electronics Engineering	147.75	95.00
4	B.E - Electronics and Communication Engineering	122.50	82.25
5	B.E - Computer science and Engineering	194.50	95.50
6	B.E - Mechanical Engineering	169.75	88.25
7	B.E- Civil Engineering	148.00	89.50
8	B.E- Aeronautical Engineering	144.00	113.50

\*As applicable by Tamilnadu Government

### **Campus placement in last 3 years**

<b>S.No.</b>	<b>Year</b>	<b>Name of the Company/Industry</b>	<b>Number of Students Placed</b>
1	2020	Drona Solutions	16
		PEOPLE TALENT	11
		SAI SOFTWARE SOLUTIONS	8
		HCL	7
		TEXMO INDUSTRIES Pvt LTD	32
		HDFC	15
		SLASH SUPPORT	8
		PROBE	16
2	2021	Drona Solutions	18
		PEOPLE TALENT	12
		SAI SOFTWARE SOLUTIONS	10
		HCL	13
		TEXMO INDUSTRIES Pvt LTD	32
		HDFC	21
		SLASH SUPPORT	18
		PROBE	15
3	2022	Elim Mediatech Pvt Ltd	18
		Thoppil Constructors India Pvt.Ltd	22
		Maathangi Info Research Solutions Private	31
		Thai Plastic Private Limited	19



	Sea Sense Technologies	35
	Cogent E-Service Limited	26
	EDUREKA	30
	Resbee Info Technologies Pvt.Ltd	35
	Nubizuez Private Limited	32
	NIMS Health Care	40

- **Collaboration with Foreign University**

Nil

**Course wise number of students admitted in the previous year**

S.No	Course(s)	AICTE Approved Intake for 2022-2023	Actual number of students admitted for 2022-2023
1	B.E - Biomedical Engineering	60	39
2	B.Tech - Biotechnology	60	30
3	B.E - Electrical and Electronics Engineering	60	8
4	B.E - Electronics and Communication Engineering	60	7
5	B.E - Computer Science and Engineering	60	43
6	B.E - Mechanical Engineering	90	9
7	B.E- Civil Engineering	60	13
8	B.E- Aeronautical Engineering	60	10
9	B.E – Artificial Intelligence & Machine Learning)	30	6
10	B.E – Cyber Security	30	8
11	B.E – Robotics and Automation	30	2
12	B.Tech – Agricultural Engineering	60	11
13	M.E - Embedded Systems	18	5
14	M.E – CAD / CAM	18	13
15	M.E – Computer Science and Engineering	18	3
16	M.E – Biomedical Engineering	18	17
17	M.E – Power Systems Engineering	18	10

18	M.Tech – Biotechnology	18	14
19	M.Tech – Nano Science and Technology	18	1
20	M.E – Communication Engineering	18	2
21	M.E – Structural Engineering	18	18
22	MCA - Master of Computer Applications	60	41
23	MBA - Master of Business Administration	60	60

**Branch wise List of Faculty Members:**

S.No	Department	Total number of faculty
1	B.E - Biomedical Engineering	10
2	B.Tech - Biotechnology	10
3	B.E - Electrical and Electronics Engineering	9
4	B.E - Electronics and Communication Engineering	10
5	B.E - Computer Science and Engineering	10
6	B.E - Mechanical Engineering	21
7	B.E- Civil Engineering	18
8	B.E- Aeronautical Engineering	9
9	B.E – Artificial Intelligence & Machine Learning)	3
10	B.E – Cyber Security	3
11	B.E – Robotics and Automation	3
12	B.Tech – Agricultural Engineering	3
13	M.E - Embedded Systems	3
14	M.E – CAD / CAM	3
15	M.E – Computer Science and Engineering	4
16	M.E – Biomedical Engineering	3
17	M.E – Power Systems Engineering	3
18	M.Tech – Biotechnology	3
19	M.Tech – Nano Science and Technology	3

20	M.E – Communication Engineering	3
21	M.E – Structural Engineering	3
22	MCA - Master of Computer Applications	10
23	MBA - Master of Business Administration	7
24	<b>Humanities &amp; Social Sciences (Including physical director and librarian)</b>	36

**\* Number of Faculty employed and left during the last three years**

Sl.No	Number of faculty Employed	Left during last three years
1.	209	55

**VIII FEE:**

<b>Details of Fee Approved by State Committee</b>	Through counseling	Rs. 50000/-
	Through management quota	Rs. 50000/-
<b>Boarding and Lodging Fee</b>	Admission- Mess Charges Electricity Charges	Rs. 4000/- Rs. 25000/- Rs.6000/-
	Room Rent	Rs.15000/-
	Total	Rs. 50000/-

**\* Scholarship Details**

Year	No of Student	Categories					Amount
		Minority	MBC	BC	First Graduate BC	SC/ST	
2003-2004	18	-	1	10	7	-	46,810.00
2004-2005	38	-	1	22	15	-	96,615.00
2005-2006	70	-	3	41	26	-	1,82,835.00
2006-2007	70	-	3	35	32	-	2,19,040.00
2007-2008	109	-	3	53	53	-	3,54,210.00
2008-2009	252	14	8	106	103	21	12,57,310.00
2009-2010	378	33	11	164	153	17	24,67,183.00
2010-2011	336	41	11	151	117	16	25,28,974.00
2011-2012	388	3	30	206	135	14	17,84,164.00
2012-2013	578	20	45	328	160	25	3529371.00
2013-2014	586	33	45	262	211	35	4891540.00
2014-2015	522	52	37	185	215	33	5013825.00
2015-2016	378	27	26	137	163	25	3353440.00
2016-2017	314	9	24	74	145	62	5460495.00
2017-2018	461	13	16	152	141	136	12630410.00
2018-2019	391	6	7	99	23	256	19387550.00
2019-2020	427	21	1	97	21	287	21172300.00
2020-2021	518	0	0	111	48	359	23696917.00
2021-2022	768	5	10	118	166	469	32472416.00

## IX. ADMISSION

- Number of Seats sanctioned with the year of approval

Sl.No	Year	Branch	No of Seats Sanctioned
1.	2002-2003	B.E – Electronics and Communication Engineering	60
		B.E – Instrumentation and Control Engineering	60
		B.Tech – Industrial Biotechnology	60
2.	2003-2004	B.E – Electronics and Communication Engineering	60
		B.E – Instrumentation and Control Engineering	60
		B.Tech – Industrial Biotechnology	60
3.	2004-2005	B.E – Electronics and Communication Engineering	60
		B.E – Instrumentation and Control Engineering	60
		B.Tech – Industrial Biotechnology	60
4.	2005-2006	B.E – Electronics and Communication Engineering	60
		B.E – Instrumentation and Control Engineering	60
		B.Tech – Industrial Biotechnology	60
		B.E – Electrical and Electronics Engineering	60
		B.E – Biomedical Engineering	60
		B.E – Mechanical Engineering	60
		MCA – Master of Computer Applications	60
5.	2006-2007	B.E – Electronics and Communication Engineering	120
		B.E – Computer Science and Engineering	60
		B.Tech – Biotechnology	60
		B.E – Electrical and Electronics Engineering	60
		B.E – Biomedical Engineering	60
		B.E – Mechanical Engineering	60
		MCA – Master of Computer Applications	60
		MBA – Master of Business Administration	60
6.	2007-2008	B.E – Electronics and Communication Engineering	120
		B.E – Computer Science and Engineering	60
		B.Tech – Biotechnology	60
		B.E – Electrical and Electronics Engineering	60
		B.E – Biomedical Engineering	60
		B.E – Mechanical Engineering	60
		MCA – Master of Computer Applications	60
		MBA – Master of Business Administration	60

7	2008-2009	B.E – Electronics and Communication Engineering	120
		B.E – Computer Science and Engineering	60
		B.Tech – Biotechnology	60
		B.E – Electrical and Electronics Engineering	60
		B.E – Biomedical Engineering	60
		B.E – Mechanical Engineering	60
		M.E – Embedded Systems	18
		M.Tech – Biotechnology	18
		MCA – Master of Computer Applications	60
		MBA – Master of Business Administration	60
8	2009-2010	B.E – Electronics and Communication Engineering	120
		B.E – Computer Science and Engineering	60
		B.Tech – Biotechnology	60
		B.E – Electrical and Electronics Engineering	60
		B.E – Biomedical Engineering	60
		B.E – Mechanical Engineering	60
		M.E – Embedded Systems	18
		M.Tech – Biotechnology	18
		MCA – Master of Computer Applications	60
		MBA – Master of Business Administration	60
9.	2010-2011	B.E – Electronics and Communication Engineering	120
		B.E – Computer Science and Engineering	60
		B.Tech – Biotechnology	60
		B.E – Electrical and Electronics Engineering	60
		B.E – Biomedical Engineering	60
		B.E – Mechanical Engineering	60
		M.E – Embedded Systems	18
		M.Tech – Biotechnology	18
		MCA – Master of Computer Applications	60
		MBA – Master of Business Administration	60
10.	2011-2012	B.E – Bio-Medical Engineering	60
		B.Tech – Bio-Technology	60
		B.E – Electrical and Electronics Engineering	60
		B.E – Electronics and Communication Engineering	120
		B.E – Computer science and Engineering	60
		B.E – Mechanical Engineering	120
		B.E- Civil Engineering	60
		M.E – Embedded Systems	18
		M.E – CAD / CAM	18
		M.E – Computer Science and Engineering	18
		M.E – Biomedical Engineering	18
		M.Tech – Biotechnology	18
		M.Tech – Nano Science and Technology	18
		MCA – Master of Computer Applications	60
MBA – Master of Business Administration	60		

11.	2012-2013	B.E – Biomedical Engineering	60
		B.Tech – Bio-Technology	60
		B.E – Electrical and Electronics Engineering	60
		B.E – Electronics and Communication Engineering	120
		B.E – Computer science and Engineering	60
		B.E – Mechanical Engineering	120
		B.E- Civil Engineering	60
		B.E- Aeronautical Engineering	60
		M.E – Embedded Systems	18
		M.E – CAD / CAM	18
		M.E – Computer Science and Engineering	18
		M.E – Biomedical Engineering	18
		M.E – Power Systems Engineering	18
		M.Tech – Biotechnology	18
		M.Tech – Nano Science and Technology	18
		MCA – Master of Computer Applications	60
		MBA – Master of Business Administration	60
12.	2013-2014	B.E – Biomedical Engineering	60
		B.Tech – Bio-Technology	60
		B.E – Electrical and Electronics Engineering	60
		B.E – Electronics and Communication Engineering	120
		B.E – Computer science and Engineering	60
		B.E – Mechanical Engineering	120
		B.E- Civil Engineering	60
		B.E- Aeronautical Engineering	60
		M.E – Embedded Systems	18
		M.E – CAD / CAM	18
		M.E – Computer Science and Engineering	18
		M.E – Biomedical Engineering	18
		M.E – Power Systems Engineering	18
		M.Tech – Biotechnology	18
		M.Tech – Nano Science and Technology	18
		MCA – Master of Computer Applications	60
		MBA – Master of Business Administration	60

13.	2014-2015	B.E – Biomedical Engineering	60
		B.Tech – Bio-Technology	60
		B.E – Electrical and Electronics Engineering	60
		B.E – Electronics and Communication Engineering	120
		B.E – Computer science and Engineering	60
		B.E – Mechanical Engineering	180
		B.E- Civil Engineering	120
		B.E- Aeronautical Engineering	60
		M.E – Embedded Systems	18
		M.E – CAD / CAM	18
		M.E – Computer Science and Engineering	18
		M.E – Biomedical Engineering	18
		M.E – Power Systems Engineering	18
		M.E – Communications Engineering	18
		M.E – Structural Engineering	18
		M.Tech – Biotechnology	18
		M.Tech – Nano Science and Technology	18
		MCA – Master of Computer Applications	60
		MBA – Master of Business Administration	60
13.	2015-2016	B.E – Biomedical Engineering	60
		B.Tech – Bio-Technology	60
		B.E – Electrical and Electronics Engineering	60
		B.E – Electronics and Communication Engineering	120
		B.E – Computer science and Engineering	60
		B.E – Mechanical Engineering	180
		B.E- Civil Engineering	120
		B.E- Aeronautical Engineering	60
		M.E – Embedded Systems	18
		M.E – CAD / CAM	18
		M.E – Computer Science and Engineering	18
		M.E – Biomedical Engineering	18
		M.E – Power Systems Engineering	18
		M.E – Communications Engineering	18
		M.E – Structural Engineering	18
		M.Tech – Biotechnology	18
		M.Tech – Nano Science and Technology	18
		MCA – Master of Computer Applications	60
		MBA – Master of Business Administration	60
13.	2016-2017	B.E – Biomedical Engineering	60
		B.Tech – Bio-Technology	60
		B.E – Electrical and Electronics Engineering	60
		B.E – Electronics and Communication Engineering	120
		B.E – Computer science and Engineering	60
		B.E – Mechanical Engineering	180
		B.E- Civil Engineering	120



		B.E- Aeronautical Engineering	60
		M.E – Embedded Systems	18
		M.E – CAD / CAM	18
		M.E – Computer Science and Engineering	18
		M.E – Biomedical Engineering	18
		M.E – Power Systems Engineering	18
		M.E – Communications Engineering	18
		M.E – Structural Engineering	18
		M.Tech – Biotechnology	18
		M.Tech – Nano Science and Technology	18
		MCA – Master of Computer Applications	60
		MBA – Master of Business Administration	60
13.	2017-2018	B.E – Biomedical Engineering	60
		B.Tech – Bio-Technology	60
		B.E – Electrical and Electronics Engineering	60
		B.E – Electronics and Communication Engineering	120
		B.E – Computer science and Engineering	60
		B.E – Mechanical Engineering	180
		B.E- Civil Engineering	120
		B.E- Aeronautical Engineering	60
		M.E – Embedded Systems	18
		M.E – CAD / CAM	18
		M.E – Computer Science and Engineering	18
		M.E – Biomedical Engineering	18
		M.E – Power Systems Engineering	18
		M.E – Communications Engineering	18
		M.E – Structural Engineering	18
		M.Tech – Biotechnology	18
		M.Tech – Nano Science and Technology	18
		MCA – Master of Computer Applications	60
		MBA – Master of Business Administration	60
14.	2018-2019	B.E – Biomedical Engineering	60
		B.Tech – Bio-Technology	60
		B.E – Electrical and Electronics Engineering	60
		B.E – Electronics and Communication Engineering	120
		B.E – Computer science and Engineering	60
		B.E – Mechanical Engineering	180
		B.E- Civil Engineering	120
		B.E- Aeronautical Engineering	60
		M.E – Embedded Systems	18
		M.E – CAD / CAM	18
		M.E – Computer Science and Engineering	18
		M.E – Biomedical Engineering	18
		M.E – Power Systems Engineering	18
		M.E – Communications Engineering	18

		M.E – Structural Engineering	18
		M.Tech – Biotechnology	18
		M.Tech – Nano Science and Technology	18
		MCA – Master of Computer Applications	60
		MBA – Master of Business Administration	60
15.	2019-2020	B.E – Biomedical Engineering	60
		B.Tech – Bio-Technology	60
		B.E – Electrical and Electronics Engineering	30
		B.E – Electronics and Communication Engineering	60
		B.E – Computer science and Engineering	60
		B.E – Mechanical Engineering	180
		B.E- Civil Engineering	120
		B.E- Aeronautical Engineering	30
		M.E – Embedded Systems	18
		M.E – CAD / CAM	18
		M.E – Computer Science and Engineering	18
		M.E – Biomedical Engineering	18
		M.E – Power Systems Engineering	18
		M.E – Communications Engineering	18
		M.E – Structural Engineering	18
		M.Tech – Biotechnology	18
		M.Tech – Nano Science and Technology	18
		MCA – Master of Computer Applications	30
		MBA – Master of Business Administration	60
		16.	2020-2021
B.Tech – Bio-Technology	60		
B.E – Electrical and Electronics Engineering	60		
B.E – Electronics and Communication Engineering	60		
B.E – Computer science and Engineering	60		
B.E – Mechanical Engineering	180		
B.E- Civil Engineering	120		
B.E- Aeronautical Engineering	60		
M.E – Embedded Systems	18		
M.E – CAD / CAM	18		
M.E – Computer Science and Engineering	18		
M.E – Biomedical Engineering	18		
M.E – Power Systems Engineering	18		
M.E – Communications Engineering	18		
M.E – Structural Engineering	18		
M.Tech – Biotechnology	18		
M.Tech – Nano Science and Technology	18		
MCA – Master of Computer Applications	60		
MBA – Master of Business Administration	60		
17.	2021-2022		
		B.Tech – Bio-Technology	60

		B.E – Electrical and Electronics Engineering	60
		B.E – Electronics and Communication Engineering	60
		B.E – Computer science and Engineering	60
		B.E – Mechanical Engineering	180
		B.E- Civil Engineering	120
		B.E- Aeronautical Engineering	60
		M.E – Embedded Systems	18
		M.E – CAD / CAM	18
		M.E – Computer Science and Engineering	18
		M.E – Biomedical Engineering	18
		M.E – Power Systems Engineering	18
		M.E – Communications Engineering	18
		M.E – Structural Engineering	18
		M.Tech – Biotechnology	18
		M.Tech – Nano Science and Technology	18
		MCA – Master of Computer Applications	60
		MBA – Master of Business Administration	60
18	2022-2023	B.E - Biomedical Engineering	60
		B.Tech - Biotechnology	60
		B.E - Electrical and Electronics Engineering	60
		B.E - Electronics and Communication Engineering	60
		B.E - Computer Science and Engineering	60
		B.E - Mechanical Engineering	90
		B.E- Civil Engineering	60
		B.E- Aeronautical Engineering	60
		B.E – Artificial Intelligence & Machine Learning)	30
		B.E – Cyber Security	30
		B.E – Robotics and Automation	30
		B.Tech – Agricultural Engineering	60
		M.E - Embedded Systems	18
		M.E – CAD / CAM	18
		M.E – Computer Science and Engineering	18
		M.E – Biomedical Engineering	18
		M.E – Power Systems Engineering	18
		M.Tech – Biotechnology	18
		M.Tech – Nano Science and Technology	18
		M.E – Communication Engineering	18
		M.E – Structural Engineering	18
		MCA - Master of Computer Applications	60
		MBA - Master of Business Administration	60

- **Number of Students admitted under various categories in the last three years**

Sl.No.	Branch	Actual admissions 2022-2023	Actual admissions 2021-2022	Actual admissions 2020-2021
1.	B.E - Biomedical Engineering	39	57	57
2.	B.Tech - Biotechnology	30	14	56
3.	B.E - Electrical and Electronics Engineering	8	55	55
4.	B.E - Electronics and Communication Engineering	7	21	30
5.	B.E - Computer Science and Engineering	43	44	51
6.	B.E - Mechanical Engineering	9	127	137
7.	B.E- Civil Engineering	13	77	85
8.	B.E- Aeronautical Engineering	10	5	16
9.	B.E – Artificial Intelligence & Machine Learning)	6	-	-
10.	B.E – Cyber Security	8	-	-
11.	B.E – Robotics and Automation	2	-	-
12.	B.Tech – Agricultural Engineering	11	-	-
13.	M.E - Embedded Systems	5	10	6
14.	M.E – CAD / CAM	13	18	9
15.	M.E – Computer Science and Engineering	3	7	10
16.	M.E – Biomedical Engineering	17	18	8
17.	M.E – Power Systems Engineering	10	10	9
18.	M.Tech – Biotechnology	14	15	2
19.	M.Tech – Nano Science and Technology	1	8	0
20.	M.E – Communication Engineering	2	4	1
21.	M.E – Structural Engineering	18	17	18
22.	MCA - Master of Computer Applications	41	38	16
23.	MBA - Master of Business Administration	60	52	57

- **Number of Applications Received During Last two years for admission under management Quota**

Year	Applications received
2022-2023	475

2021-2022	450
-----------	-----

#### **X. ADMISSION PROCEDURE:**

As per Tamil Nadu Government Policy

#### **XV. INFORMATION ON INFRASTRUCTURE AND OTHER RESOURCES AVAILABLE**

<b>Sl.No</b>	<b>Item</b>	<b>Available(Yes/No)</b>
1.	Drinking Water facility	YES
2.	Electric Supply	YES
3.	Generator (min.25 KVA)	YES
4.	Sewage Disposal	YES
5.	Telephone facility	YES
6.	Vehicle Parking Stand	YES
7.	Website	YES
8.	Barrier free built environment for disable	YES
9.	Safety Provisions(Fire and Others)	YES
10.	General Insurance for Assets	YES
11.	All Weather Approach road	YES
12.	Notice Boards	YES
13.	Public announcement System	YES
14.	ERP for student-institution,Parent interaction	YES
15.	Transport facilities for staff and students	YES
16.	Bank /extension counter facility / post	NO
17.	CCTV Security	YES
18.	LCD in Class Rooms	YES
19.	Group Insurance for Employee	YES
20.	Group Insurance for Students	YES
21.	Staff Quarters	NO
22.	Rain Water Harvesting Structures	YES

- **Library**

S. No	Course(s)	Number of titles of the books	Number of volumes	Journals	
				National	International
1	B.E - Bio-Medical Engineering	638	2550	6	6
2	B.Tech - Bio-Technology	825	3300	6	6
3	B.E - Electrical and Electronics Engineering	675	3000	6	6
4	B.E - Electronics and Communication Engineering	1425	5700	6	12
5	B.E - Computer science and Engineering	600	2401	6	6
6	B.E - Mechanical Engineering	888	3550	8	10
7	B.E- Civil Engineering	306	1723	6	3
8	B.E- Aeronautical Engineering	200	1200	6	3
9	M.E - Embedded Systems	212	1000	6	4
10	M.E – CAD / CAM	162	900	6	4
11	M.E – Computer Science and Engineering	113	700	2	4
12	M.E – Biomedical Engineering	75	400	3	4
13	M.E – Power Systems Engineering	75	400	6	1
14	M.E – Communications Engineering	45	180	3	1
15	M.E – Structural Engineering	43	266	3	1
16	M.Tech – Biotechnology	175	700	2	5
17	M.Tech – Nano Science and Technology	125	500	4	6
18	Master of Computer Applications	1150	4600	6	6
19	Master of Business Administration	1025	4100	9	15
<b>Total</b>		<b>8757</b>	<b>37170</b>	<b>100</b>	<b>103</b>

- **E-Library facilities - Available**

## Chairman and Members of Governing Council

Name	Position	Qualification	Present Designation / Occupation	Telephone Numbers	Mobile No.	E-mail id	Address
Dr. ASHOK KUMAR T	Member Secretary	OTHERS-M.D-Others-DOCTOR	PROFESSOR	-	9443130263	ashokkumart263@gmail.com	KUMARAHAM,KOLLAMAVADI - 629801 Kanyakumari
Dr. JOTHI BASU S	Members	M.E.-CAD/CAM	PRINCIPAL	04651 - 239900	9281090009	udayajbonline@gmail.com	UDAYA SCHOOL OF ENGINEERING - 629204 Kanyakumari
Mr. BARATHAN B	Members	M.E.-Structural Engineering	PROFESSOR	-	9442247635	barathan632@gmail.com	NMS KAMARAJ POLYTECHNIC COLLEGE, PAZHAVILAI - 629004 Kanyakumari
Dr. CHRISTOPHER T	Members	Ph.D.-Others-mechanical engineering	PROFESSOR	-	9443998275	978christ275@gmail.com	GOVT. COLLEGE OF ENGG, TIRUNELVELI - 627007 Tirunelveli
Mr. KALYANASUNDARAM S	Members	B.A.-English	BRANCH MANAGER SETC	-	9486067294	kalyana294@gmail.com	SETC, NAGERCOIL - 629001 Kanyakumari
Mr. MANIVANNAN A	Members	Ph.D.-Others-Mechanical Engineering	PROFESSOR	-	9486230632	mani632@gmail.com	ANNA UNIVERSITY - 627007 Tirunelveli
Mr. RAMESH K	Members	M.Tech.-Information Technology	SCIENTIST	-	9442273841	978udayaengineering@gmail.com	ISRO - 627133 Tirunelveli
Dr. ARJUN SINGH ACT	Members	OTHERS-M.B.B.S- Others-DOCTOR	TRUSTEE	-	8903603699	978udayaengineering@gmail.com	RAJAKKAMANGALAM WEST JUNCTION, RAJAKKAMANGALAM POST - 629502 Kanyakumari
Mr. THAYAPARAN C	Vice Chairperson	M.E.-Manufacturing Engineering	CHAIRMAN	-	9443358902	978udayaengineering@gmail.com	19/2, RAJAKKAMANGALAM WEST JUNCTION, RAJAKKAMANGALAM POST - 629502 Kanyakumari
Mr. THIRUNAVUKARASU A	Chairman	OTHERS-iES-Others-ies	GENERAL MANAGER BSNL	-	9443100540	thirunavukarasubsnl@gmail.com	BSNL - NAGERCOIL Kanyakumari

## DETAILS OF EXISTING FACULTY MEMBERS

Name of the Course	Sl. No.	Name (s) of the Teaching Faculty	Designation (Lecturer/ Asst. Professor/ Professor)	Qualifications with specialization			Date of Birth	Experience (Years)			Date of Joining the Institution	Gross total salary as on date with scale & Basic pay
				UG	PG	Doctorate		a	b	c		
<b>ECE</b>	1.	Dr.T.Sunitha	Professor	B.E (ECE)	M.E Applied Electronics	-	25-05-1971	14	-	-	20-05-2009	37400+AGP 8700
	2.	Dr.A.Sundaramoorthy	Professor	B.E (ECE)	M.E Applied Electronics	-	23-08-1980	3	-	-	01-12-2022	37400+AGP 8700
	3.	Ms.S.B.Thanga Malar	Assistant Professor	B.E (ECE)	M.E (Applied Electronics)	-	09-01-1984	16	-	-	21-05-2007	15600+AGP 5400
	4.	Ms. B. R. Uma Devi	Assistant Professor	B.E (ECE)	M.E (Communication System)	-	07-05-1985	15	-	-	03-01-2008	15600+AGP 5400
	5.	Ms.J.Hinduja	Assistant Professor	B.E (ECE)	M.E CSE	-	16-10-1986	14	-	-	01-06-2009	15600+AGP 5400
	6.	Mr.J.Jaya Lalin	Assistant Professor	B.E (ECE)	M.E ( Applied Electronics )	-	25-09-1987	10	-	-	05-01-2012	15600+AGP 5400
	7.	Mrs.Niranchana.P.V	Assistant Professor	B.E (ECE)	M.E ( Applied Electronics )	-	02-04-1988	7	-	-	03-08-2015	15600+AGP 5400
	8.	Mr.V.S.Renjith	Assistant Professor	B.E (ECE)	M.E ( Applied Electronics )	-	06-01-1993	5	-	-	09-07-2017	15600+AGP 5400
	9.	Ms.S.Sindhuja	Assistant Professor	B.E (ECE)	M.E ( Applied Electronics )	-	21-06-1993	5	-	-	09-10-2017	15600+AGP 5400
	10.	Ms.P.M.Dafny Paul	Asst. Prof.	B.E (ECE)	M.E (Applied Electronics)	-	08-03-2000	2	-	-	08-03-2021	15600+AGP 5400
	11.	Ms.M.Priyankagithanjali	Asst. Prof.	B.E (ECE)	M.E (Applied Electronics)	-	25-12-1987	2	-	-	03-02-2021	15600+AGP 5400



	12.	Mrs.L.R.Jonisha Miriam	Asst. Prof.	B.E (ECE)	M.E (Communication Systems)		29-12-1991	-	-	-	24-03-2023	15600+AGP 5400
<b>EEE</b>	1.	Mr. T.Rajesh	Assistant Professor	B.E (EEE)	M.E Power Electronics & Drives	-	23-03-1974	14	-	-	18-08-2008	15600+AGP 5400
	2.	Mrs.R.Shiba	Assistant Professor	B.E (EEE)	M.E (Communication Systems )	-	18-02-1988	10	-	-	30-08-2012	15600+AGP 5400
	3.	Mrs.C.Sreevidhya	Assistant Professor	B.E (EEE)	M.E ( Applied Electronics )	-	07-11-1987	8	-	-	03-08-2015	15600+AGP 5400
	4.	Mrs.Manchu.R.S	Assistant Professor	B.E (ECE)	M.E ( Applied Electronics )	-	20-01-1990	6	-	-	13-07-2016	15600+AGP 5400
	5.	Mr.K.Merin	Assistant Professor	B.E (EEE)	M.E (AE)	-	15-02-1984	4	-	-	01-06-2019	15600+AGP 5400
	6.	Mr.M.Muralish	Assistant Professor	B.E (EEE)	M.E (PED)	-	10-03-1984	4	-	-	03-04-2019	15600+AGP 5400
	7.	Ms.G.Suja	Assistant Professor	B.E (ICE)	M.E (PE&D)	-	12-05-1988	2	-	-	18-01-2021	15600+AGP 5400
	8.	Ms.S.Nivya	Assistant Professor	B.E (EEE)	M.E ( Applied Electronics )	-	21-07-1996	-	-	-	02-11-2022	15600+AGP 5400
	9.	Mrs.J.Asha	Assistant Professor	B.E (EEE)	M.E (PED)	-	08-11-1992	1	-	-	15-03-2022	15600+AGP 5400
	10.	Mrs.P.M.Lalley	Assistant Professor	B.E (EEE)	M.E (Embedded System Tech.)	-	14-05-1971	14	-	-	13-09-2022	15600+AGP 5400
	11.	Mrs.R.Binsha	Assistant Professor	B.E (EEE)	M.E (Software Engineering)	-	30-11-1986	11	-	-	03-04-2023	15600+AGP 5400
<b>BM</b>	1	Dr.J.Mahil	Professor	B.E (EEE)	M.E (Process Control Instrumentation)	Ph.D	27-07-1980	19	-	-	18-08-2021	37400+AGP 8700
	2	Mr.Mohan Kumar	Assistant Professor	B.E E&I	M.E Applied Electronics	-	26-04-1983	14	-	-	01-06-2009	15600+ AGP 5400

	3	Ms.H.S.Anuja	Assistant Professor	B.E (BM)	M.E (Applied Electronics)	-	01-05-1989	10	-	-	17-07-2013	15600+AGP 5400
	4	Mrs.S.Sebija	Assistant Professor	B.E (ECE)	M.E ( Applied Electronics )	-	17-05-1989	9	-	-	02-01-2014	15600+AGP 5400
	5	Ms.Dayalin Subi.J	Assistant Professor	B.E (ECE)	M.E ( Applied Electronics )	-	12-05-1991	8	-	-	14-07-2015	15600+AGP 5400
	6	Mr.D.Das Soruba	Assistant Professor	B.E (ECE)	M.E ( Applied Electronics )	-	24-08-1987	8	-	-	14-07-2015	15600+AGP 5400
	7	Ms.D.Remi	Assistant Professor	B.E (BM)	M.E ( BM )	-	16-02-1990	7	-	-	15-12-2016	15600+AGP 5400
	8	Ms.Lincy S L Monisha	Assistant Professor	B.E (ECE)	M.E ( Medical Electronics )	-	25-01-1992	6	-	-	03-07-2017	15600+AGP 5400
	9	Mrs.J.Sanetha Begam	Assistant Professor	B.E (ECE)	M.E (Communication Systems)	-	21-09-1994	1	-	-	16-05-2022	15600+AGP 5400
<b>BT</b>	1	Dr.L.R.Monisha Miriam	Professor	B.Tech Bio-Tech	M.Tech Bio-Tech	Ph.D	14-08-1986	16	-	-	21-05-2007	37400+AGP 8700
	2	Mrs.C.Angel Rose Stary	Associate Professor	B.Tech (Chemical)	M.Tech (Biotech)	-	28-02-1983	17	-	-	01-07-2005	15600+AGP 5400
	3	Ms.D.Devina Merin	Assistant Professor	B.Tech (Biotechnology)	M.Tech (Biotechnology)	-	10-04-1984	13	-	-	01-07-2010	15600+AGP 5400
	4	Ms.J.Sherly	Assistant Professor	B.Tech (Biotechnology)	M.Tech (Biotechnology)	-	11-07-1992	8	-	-	03-08-2015	15600+AGP 5400
	5	Ms.G.R.Meera	Assistant Professor	B.Tech (Biotechnology)	M.Tech (Biotechnology)	-	05-05-1990	6	-	-	06-09-2017	15600+AGP 5400
	6	Mr.S.Sujin David Rajan	Assistant Professor	B.Tech (Biotechnology)	M.Tech (Biotechnology)	-	29-05-1994	6	-	-	06-09-2017	15600+AGP 5400
	7	Mr.M.Mari Vignesh	Assistant Professor	B.Tech (Biotechnology)	M.Tech (Biotechnology)	-	05-04-1993	6	-	-	06-09-2017	15600+AGP 5400
	8	Ms.J.Jeslin	Assistant Professor	B.Tech (Biotechnology)	M.Tech (Biotechnology)	-	15-11-1994	5	-	-	08-02-2018	15600+AGP 5400

	9	Mrs.P.Arsula Rose	Assistant Professor	B.Sc (Biotechnology)	M.Tech (NST)	-	10-06-1979	6	-	-	06-09-2017	15600+AGP 5400
<b>CSE</b>	1	Ms.S.Jamelia	Associate Professor	B.E (CSE)	M.Tech (CSE)	-	26-07-1978	15	-	-	09-06-2008	15600+AGP 5400
	2	Ms.C.Brintha	Assistant Professor	B.Tech (IT)	M.E (CSE)	-	08-03-1986	14	-	-	01-07-2009	15600+AGP 5400
	3	Mr.M.B.Jerrysmith	Assistant Professor	B.E (CSE)	M.Tech (C & IT)	-	09-06-1986	12	-	-	01-06-2011	15600+AGP 5400
	4	Ms.T.Escalin Freetha	Assistant Professor	B.E (CSE)	M.Tech (C & IT)	-	28-03-1985	12	-	-	01-06-2011	15600+AGP 5400
	5	Mr.Bhagavathi Raja .K	Assistant Professor	B.E (CSE)	M.E (CSE)	-	12-07-1992	7	-	-	20-09-2016	15600+AGP 5400
	6	Mr.M.Mathi Murugan	Assistant Professor	MCA	M.Tech(IT)	-	21-05-1980	14	-	-	17-05-2018	15600+AGP 5400
	7	Mrs.A.Angel Sneha	Assistant Professor	B.E (CSE)	M.E (CSE)	-	26-01-1993	2	-	-	14-06-2021	15600+AGP 5400
	8	Mrs.S.V.Sajeela	Assistant Professor	B.E (CSE)	M.E (CSE)	-	25-05-1987	2	-	-	04-07-2022	15600+AGP 5400
	9	Mr.J.Jegan Gladly Prince	Assistant Professor	B.E (CSE)	M.E (CSE)	-	12-02-1989	-	-	-	27-03-2023	15600+AGP 5400
	10	Mr.S.R.Sujin Raja	Assistant Professor	B.E (CSE)	M.E (CSE)	-	09-07-1987	-	-	-	03-01-2023	15600+AGP 5400
	11	Mrs.J.Sails Cablin	Assistant Professor	B.Tech (IT)	M.Tech (IT)	-	01-06-1985	4	-	-	27-03-2023	15600+AGP 5400
<b>CSE (CS)</b>	1	Ms.Anishlin.R.J	Assistant Professor	M.Sc (CS)	M.E (CSE)	-	23-12-1988	8	-	-	03-08-2015	15600+AGP 5400
	2	Mr.J.Jerin	Assistant Professor	B.E (CSE)	M.E (Cyber Security)	-	20-09-1991	1	-	-	02-02-2022	15600+AGP 5400
	3	Ms.M.K.Aarathy Thambi	Assistant Professor	B.E (CSE)	M.E (CSE)	-	30-05-1996	1	-	-	04-05-2022	15600+AGP 5400
<b>CSE (AI)</b>	1	Mr.N.Arun Venkadesh	Assistant Professor	B.E (CS)	M.E (Software Engineering)	-	08-05-1984	12	-	-	10-10-2022	15600+AGP 5400
	2	Mrs.N.S.Baviya	Assistant Professor	B.E (CSE)	M.E (EST)	-	04-06-1993	1	-	-	10-08-2022	15600+AGP 5400

	3	Mrs.M.P.Srithi	Assistant Professor	B.E (CSE)	M.E (CSE)	-	16-05-1997	1	-	-	29-08-2022	15600+AGP 5400
<b>Mechanical</b>	1	Dr.C.Rajendran	Professor	B.E (Mechanical)	M.E (Manufacturing)	Ph.D	05-05-1968	16	-	-	15-05-2023	37400+AGP 8700
	2	Dr.A.Florence	Assistant Professor	B.E (Mechanical)	M.E (CAD/CAM)	Ph.D	04-06-1979	1	-	-	02-02-2022	15600+AGP 5400
	3	Mr.S.Sunish Kumar	Associate Professor	B.E (Mechanical)	M.E (Mfg. Engg)	-	28-03-1972	10	-	-	03-08-2015	15600+AGP 5400
	4	Mr.C.Thayaparan	Associate Professor	B.E (Mechanical)	M.E (Production Engg)	-	08-07-1962	27	-	-	03-08-2015	15600+AGP 5400
	5	Mr.G.Michael Jose	Assistant Professor	B.E (Mechanical)	M.E (CAD/CAM)	-	03-07-1987	10	-	-	01-07-2013	15600+AGP 5400
	6	Mr.R.Ratheesh	Assistant Professor	B.E (Mechanical)	M.E (CAD/CAM)	-	18-07-1989	10	-	-	01-07-2013	15600+AGP 5400
	7	Mr. S.Saravanan	Assistant Professor	B.E (Mechanical)	M.E (CAD/CAM)	-	05-07-1985	10	-	-	01-06-2013	15600+AGP 5400
	8	Mr.K.Murugan	Assistant Professor	B.E (Mechanical)	M.E (CAD/CAM)	-	26-05-1976	10	-	-	07-05-2013	15600+AGP 5400
	9	Mr. P. Satheesh	Assistant Professor	B.E (Mechanical)	M.E (CAD/CAM)	-	5-06-1988	10	-	-	07-05-2013	15600+AGP 5400
	10	Mr.Stephen.G.I	Assistant Professor	B.E (Mechanical)	M.E (CAD/CAM)	-	01-06-1992	9	-	-	31-12-2014	15600+AGP 5400
	11	Mr.T.Selvaraj	Assistant Professor	B.E (Mechanical)	M.E (CAD/CAM)	-	03-06-1980	10	-	-	07-05-2013	15600+AGP 5400
	12	Mr.Thangakrishnan.S	Assistant Professor	B.E (Mechanical)	M.E (CAD/CAM)	-	06-04-1986	9	-	-	31-12-2014	15600+AGP 5400
	13	Mr.D.Enigo Bessi	Assistant Professor	B.E (Mechanical)	M.E (Energy Engg)	-	05-04-1986	8	-	-	03-07-2015	15600+AGP 5400
	14	Mr.S.Ajin	Assistant Professor	B.E (Mechanical)	M.E (Mechatronics)	-	11-06-1990	6	-	-	15-12-2016	15600+AGP 5400
	15	Mr.Vibin Jose.M	Assistant Professor	B.E (Mechanical)	M.E (CAD/CAM)	-	18-05-1994	6	-	-	09-10-2017	15600+AGP 5400
	16	Mr.Sudan.V	Assistant Professor	B.E (Mechanical)	M.E (CAD/CAM)	-	31-01-1994	6	-	-	09-10-2017	15600+AGP 5400
	17	Mr.K.V.Subash	Assistant Professor	B.E (Mechanical)	M.E (CAD/CAM)	-	05-05-1974	7	-	-	01-03-2016	15600+AGP 5400

	18	Mr.G.M.Pradeep Prakash	Assistant Professor	B.E (Mechanical)	M.E (CAD/CAM)	-	31-07-1981	2	-	-	01-02-2021	15600+AGP 5400
	19	Mr.D.N.Aswin Manoj	Assistant Professor	B.E (Mechanical)	M.E (CAD/CAM)	-	09-04-1990	1	-	-	04-07-2022	15600+AGP 5400
	20	Mr.M.C.Clinton	Assistant Professor	B.E (Mechanical)	M.E (CAD/CAM)	-	22-02-1993	1	-	-	04-07-2022	15600+AGP 5400
	21	Mr.M.S.Sajin	Assistant Professor	B.E (Mechanical)	M.E (CAD/CAM)	-	20-10-1995	1	-	-	04-07-2022	15600+AGP 5400
	22	Mr.S.Abhijith	Assistant Professor	B.E (Mechanical)	M.E (CAD/CAM)	-	26-05-1994	1	-	-	04-07-2022	15600+AGP 5400
	23	Mr.J.Namathbasha	Assistant Professor	B.E (Mechanical)	M.E (Industrial metallurgy)	-	03-06-1990	-	-	-	01-02-2023	15600+AGP 5400
	24	Mr.S.Anand	Assistant Professor	B.E (Mechanical)	M.E (Energy Engineering)	-	22-05-1991	-	-	-	02-02-2023	15600+AGP 5400
Robotics	1	Mr.C.Dhinesh Kumar	Assistant Professor	B.E (Mechanical)	M.E (CAD/CAM)	-	03-05-1987	10	-	-	01-07-2013	15600+AGP 5400
	2	Mr.R.John Herald	Assistant Professor	B.E (Mechanical)	M.E (CAD/CAM)	-	24-05-1985	7	-	-	06-01-2016	15600+AGP 5400
	3	Mr.K.Augustin Raj	Assistant Professor	B.E (Mechanical)	M.E (CAD/CAM)	-	22-04-1995	1	-	-	04-07-2022	15600+AGP 5400
	4	Mr.T.Velrajan	Assistant Professor	B.E (Mechanical)	M.E (CAD/CAM)	-	05-07-1984	7	-	-	04-07-2022	15600+AGP 5400
Aero	1	Dr.S.Kannan	Professor	B.E (Mechanical)	M.E (Manufacturing)	Ph.D	20-05-1975	15	-	-	04-07-2022	37400+AGP 8700
	2	Mr.R.K.Nivendran	Assistant Professor	B.E (Aeronautical)	M.E (CAD/CAM)	-	05-06-1990	9	-	-	07-05-2014	15600+AGP 5400
	3	Mr.G.Satheesh Kumar	Assistant Professor	B.E (Aeronautical)	M.E (CAD/CAM)	-	15-06-1987	9	-	-	07-05-2014	15600+AGP 5400
	4	Mr.C.Sathiaseelan	Assistant Professor	B.E (Mechanical)	M.E (Production Engineering)	-	08-11-1970	8	-	-	03-08-2015	15600+AGP 5400
	5	Mr.Ratheesh Sekhar.R.C	Assistant Professor	B.E (Aeronautical)	M.E (Aeronautical)	-	29-03-1990	8	-	-	02-03-2015	15600+AGP 5400
	6	Mr.Ramesh.R	Assistant Professor	B.E (Aeronautical)	M.E (CAD/CAM)	-	04-04-1991	9	-	-	31-12-2014	15600+AGP 5400

	7	Ms. R.Remi Singh	Assistant Professor	B.E (Aeronautical)	M.E (CAD/CAM)	-	13-10-1994	2	-	-	04-01-2021	15600+AGP 5400
	8	Ms.V.G. Soorya	Assistant Professor	B.E (Aeronautical)	M.E (CAD/CAM)	-	05-05-1995	2	-	-	22-02-2021	15600+AGP 5400
	9	Mrs.P.Shamla Philip	Assistant Professor	B.E (Aeronautical)	M.E (CAD/CAM)	-	09-10-1997	-	-	-	02-02-2023	15600+AGP 5400
	10	Mr.B.Gnana Blessing	Assistant Professor	B.E (Aeronautical)	M.E (CAD/CAM)	-	20-11-1995	-	-	-	02-02-2023	15600+AGP 5400
Civil	1	Dr.J.Rajprasad	Professor	B.E (Mechanical)	M.E (Construction Engineering Mgmt)	Ph.D	16-12-1979	12	-	-	24-04-2023	37400+AGP 8700
	2	Dr.S.Sherlin Prem Nishold	Professor	B.E (Mechanical)	M.E (Sol mechanics and Foundation Engg.)	Ph.D	18-05-1984	9	-	-	04-07-2022	37400+AGP 8700
	3	Dr.T.Subash	Professor	B.E (Mechanical)	M.E (Environmental Engineering)	Ph.D	17-06-1971	12	-	-	04-07-2022	37400+AGP 8700
	4	Mr.Allen Wills	Assistant Professor	M.Sc (Physics)	M.Tech (Remote Sensing)	-	12-12-1984	9	-	-	01-04-2016	15600+AGP 5400
	5	Mrs.Sumi Bell Sutha	Assistant Professor	B.E (Civil)	M.E (Structural Engg.)	-	31-07-1980	9	-	-	02-07-2014	15600+AGP 5400
	6	Mr. J.Judulius	Assistant Professor	B.E (Civil)	M.E (Structural Engg.)	-	04-12-1992	6	-	-	09-10-2017	15600+AGP 5400
	7	Mr.D.Abishek Harries	Assistant Professor	B.E (Civil)	M.E (Structural Engg.)	-	03-09-1990	5	-	-	04-07-2018	15600+AGP 5400
	8	Mr.V.Sunil Daniel	Assistant Professor	B.E (Civil)	M.E (Structural Engg.)	-	03-09-1990	5	-	-	04-07-2018	15600+AGP 5400
	9	Mrs.B.Thanga Geetha	Assistant Professor	B.E (Civil)	M.E (Structural Engg.)	-	05-05-1992	5	-	-	04-07-2018	15600+AGP 5400
	10	Mr.K.Sunil Prakash	Assistant Professor	B.E (Civil)	M.E (Structural Engg.)	-	24-04-1996	2	-	-	04-01-2021	15600+AGP 5400
	11	Mrs.C.V.Jenisha	Assistant Professor	B.E (Civil)	M.E (Structural Engg.)	-	31-07-1992	2	-	-	03-09-2021	15600+AGP 5400
	12	Mr.M.Manisekar	Assistant Professor	B.E (Civil)	M.E (Structural Engg.)	-	20-05-1985	2	-	-	03-09-2021	15600+AGP 5400

	13	Mr.D.Abinesh Livin	Assistant Professor	B.E (Civil)	M.E (Structural Engg.)	-	26-06-1996	2	-	-	03-09-2021	15600+AGP 5400
	14	Ms.G.P.Ancy Mol	Assistant Professor	B.E (Civil)	M.E (Structural Engg.)	-	19-01-1995	1	-	-	03-01-2022	15600+AGP 5400
	15	Mr.K.Anish	Assistant Professor	B.E (Civil)	M.E (Structural Engg.)	-	03-05-1996	1	-	-	03-01-2022	15600+AGP 5400
	16	Mr.R.Karthick Raja	Assistant Professor	B.E (Civil)	M.E (Structural Engg.)	-	05-06-1992	1	-	-	04-07-2022	15600+AGP 5400
	17	Mr.S.Anto Prabin Benil	Assistant Professor	B.E (Civil)	M.E (Structural Engg.)	-	28-02-1986	1	-	-	04-07-2022	15600+AGP 5400
	18	Mr.R.Shajin	Assistant Professor	B.E (Civil)	M.E (Structural Engg.)	-	21-06-1990	1	-	-	04-07-2022	15600+AGP 5400
	19	Mr.S.Reshma Suresh	Assistant Professor	B.E (Civil)	M.E (Structural Engg.)	-	08-12-1992	1	-	-	04-07-2022	15600+AGP 5400
<b>Agricultural Engg.</b>	1	Ms.V.R.Kala	Assistant Professor	B.E (Civil)	M.E (Structural Engg.)	-	17-05-1992	7	-	-	04-07-2016	15600+AGP 5400
	2.	Ms.R.Atchaya	Assistant Professor	B.E (Civil)	M.E (Structural Engg.)	-	29-12-1998	-	-	-	01-02-2023	15600+AGP 5400
<b>Sciences &amp; Humanities</b>	1.	Dr.T.Mary Jeeva	Professor	B.Sc (Physics)	M.Sc (Physics)	M.Phil Ph.D	04-03-1974	22	-	-	25-09-2018	37400+AGP 8700
	2.	Dr.A.Rejo Jeise	Professor	B.Sc (Physics)	M.Sc (Physics)	Ph.D	20-09-1981	1	-	-	09-05-2022	37400+AGP 8700
	3.	Mrs.K.Usha	Assistant Professor	B.Sc (Physics)	M.Sc (Physics)	M.Phil	19-05-1989	6	-	-	12-01-2017	15600+AGP 5400
	4.	Ms.P.Abisha	Assistant Professor	B.Sc (Physics)	M.Sc (Physics)	M.Phil	20-05-1996	4	-	-	17-06-2019	15600+AGP 5400
	5.	Dr.N.K.Abitha Gladis	Professor	B.Sc (Maths)	M.Sc (Maths)	Ph.D	29-08-1988	1	-	-	09-05-2022	37400+AGP 8700
	6.	Mrs.H.Subha	Assistant Professor	B.Sc (Maths)	M.Sc (Maths)	M.Ed	01-06-1982	10	-	-	02-09-2013	15600+AGP 5400
	7.	Mr.T.Gopu	Assistant Professor	B.Sc (Maths)	M.Sc (Maths)	-	27-06-1969	8	-	-	21-07-2015	15600+AGP 5400
	8.	Ms.P.Vijaya Rani	Assistant Professor	B.Sc (Maths)	M.Sc (Maths)	M.Phil	2-05-1991	8	-	-	08-07-2015	15600+AGP 5400
	9.	Mrs. A.K.Kohila	Assistant Professor	B.Sc (Maths)	M.Sc (Maths)	M.Phil	20-07-1990	8	-	-	03-08-2015	15600+AGP 5400

10.	Ms.D.Jeen Rexlin	Assistant Professor	B.Sc (Maths)	M.Sc (Maths)	M.Phil	27-04-1993	5	-	-	09-07-2018	15600+AGP 5400
11.	Ms.K.Lathisha	Assistant Professor	B.Sc (Maths)	M.Sc (Maths)	M.Phil	26-02-1995	5	-	-	04-07-2018	15600+AGP 5400
12.	Mrs.M.Chithra	Assistant Professor	B.Sc (Maths)	M.Sc (Maths)	M.Phil	14-05-1985	5	-	-	01-06-2018	15600+AGP 5400
13.	Mrs.S.P.Santhy	Assistant Professor	B.Sc (Maths)	M.Sc (Maths)	M.Phil	31-07-1970	4	-	-	01-07-2019	15600+AGP 5400
14.	Ms.M.Sheeba Mol	Assistant Professor	B.Sc (Maths)	M.Sc (Maths)	M.Phil	27-01-1996	2	-	-	02-12-2019	15600+AGP 5400
15.	Ms.C.Vijila	Assistant Professor	B.Sc (Maths)	M.Sc (Maths)	M.Phil	03-06-1997	2	-	-	13-09-2021	15600+AGP 5400
16.	Mrs.J.Riji	Assistant Professor	B.Sc (Maths)	M.Sc (Maths)	M.Phil	28-09-1985	1	-	-	01-02-2022	15600+AGP 5400
17.	Ms.T.Nisha	Assistant Professor	B.Sc (Maths)	M.Sc (Maths)	M.Phil	27-10-1998	1	-	-	01-02-2022	15600+AGP 5400
18.	Mrs.G.Uma	Assistant Professor	B.Sc (Maths)	M.Sc (Maths)	M.Phil	24-04-1994	4	-	-	03-10-2018	15600+AGP 5400
19.	Mrs.C.Jashwini Janet	Assistant Professor	B.Sc (Maths)	M.Sc (Maths)	M.Phil	12-11-1998	-	-	-	23-11-2022	15600+AGP 5400
20.	Dr.C.Blessy	Professor	B.Sc (Chemistry)	M.Sc (Chemistry)	Ph.D	09-05-1985	1	-	-	09-05-2022	37400+AGP 8700
21.	Dr.M.Jaya Rajan	Professor	B.Sc (Chemistry)	M.Sc (Chemistry)	Ph.D	01-06-1983	1	-	-	05-05-2022	37400+AGP 8700
22.	Dr.S.Ginil Mon	Professor	B.Sc (Chemistry)	M.Sc (Chemistry)	Ph.D	14-05-1983	-	-	-	09-05-2022	37400+AGP 8700
23.	Mr.K.Srikrishna Ramesh	Assistant Professor	B.Sc (Chemistry)	M.Sc (Chemistry)	M.Phil	25-07-1984	14	-	-	21-01-2009	15600+AGP 5400
24.	Mrs.J.Nirmala	Assistant Professor	B.Sc (Chemistry)	M.Sc (Chemistry)	M.Phil	06-04-1979	10	-	-	02-09-2013	15600+AGP 5400
25.	Mrs.R.Ahila	Assistant Professor	B.Sc (Chemistry)	M.Sc (Chemistry)	M.Phil	02-07-1988	10	-	-	02-09-2013	15600+AGP 5400
26.	Ms.A.Jessy	Assistant Professor	B.Sc (Chemistry)	M.Sc (Chemistry)	M.Phil	29-06-1993	5	-	-	20-07-2018	15600+AGP 5400
27.	Mrs.K.Nithya Kumari	Assistant Professor	B.Sc (Chemistry)	M.Sc (Chemistry)	M.Phil	15-05-1993	4	-	-	02-12-2019	15600+AGP 5400



	28.	Mrs.P.Mary Ancy	Assistant Professor	B.Sc (Chemistry)	M.Sc (Chemistry)	M.Phil	10-03-1989	5	-	-	08-01-2018	15600+AGP 5400
	29.	Mrs.R.Mini Stella	Assistant Professor	B.Sc (Chemistry)	M.Sc (Chemistry)	M.Phil	04-03-1990	4	-	-	01-04-2019	15600+AGP 5400
	30.	Ms.Maryarockia Salooja.B	Assistant Professor	B.A (English)	M.A (English)	M.Phil	08-01-1986	8	-	-	03-08-2015	15600+AGP 5400
	31.	Mr.K.Jenish	Assistant Professor	B.A (English)	M.A (English)	M.Phil	01-06-1995	5	-	-	20-07-2018	15600+AGP 5400
	32.	Ms.S.Priyadharshini	Assistant Professor	B.A (English)	M.A (English)	M.Phil	24-06-1995	5	-	-	20-07-2018	15600+AGP 5400
	33.	Mr.A.Daniel Mervyn	Assistant Professor	B.A (English)	M.A (English)	M.Phil	01-02-1964	4	-	-	01-08-2019	15600+AGP 5400
	34.	Mr.A.Vaikundamani	Assistant Professor	B.A (English)	M.A (English)	M.Phil	20-04-1988	4	-	-	02-12-2019	15600+AGP 5400
	35.	Ms.K.Shiny	Assistant Professor	B.A (English)	M.A (English)	M.Phil	13-06-1994	4	-	-	02-12-2019	15600+AGP 5400
	36.	Mr.T.Stephen	Assistant Professor	B.A (English)	M.A (English)	M.Phil	23-07-1985	4	-	-	02-12-2019	15600+AGP 5400
	37.	Ms.S.Asathy	Assistant Professor	B.A (English)	M.A (English)	M.Phil	20-05-1990	4	-	-	02-12-2019	15600+AGP 5400
	38.	Mrs.J.Jeslin Sheriba Nevis	Assistant Professor	B.A (English)	M.A (English)	M.Phil	31-07-1989	1	-	-	04-07-2022	15600+AGP 5400
	39.	Mrs.C.Bala Sangeetha	Assistant Professor	B.A (Tamil)	M.A (Tamil)	M.Phil	07-06-1984	1	-	-	08-01-2018	15600+AGP 5400
	40.	Mrs.L.Bensha	Assistant Professor	B.E (CSE)	M.E (CSE)	-	25-07-1990	6	-	-	09-10-2017	15600+AGP 5400
	41.	Mrs.S.Menaja	Assistant Professor	B.E (CSE)	M.E (EST)	-	25-07-1990	8	-	-	01-07-2015	15600+ AGP 5400
	42.	Ms.J.Abitha	Assistant Professor	B.E (ECE)	M.E (EST)	-	29-04-1991	4	-	-	09-10-2017	15600+AGP 5400
	43.	Mrs.B.Rajalakshmi	Assistant Professor	B.E (CSE)	M.E (CSE)	-	27-11-1987	1	-	-	04-07-2022	15600+AGP 5400
<b>M.E</b> Embedded systems	1	Mr.K.E.Sajeev Jeba King	Assistant Professor	B.E (EEE)	M.E (Applied Electronics)	-	30-09-1981	15	-	-	21-05-2007	15600+ AGP 5400

	2	Mr.K.Arun	Assistant Professor	B.E (ECE)	M.E (Applied Electronics)	-	04-07-1989	2	-	-	01-02-2021	15600+AGP 5400
	3	Mr.N.G.Jerry Britto	Assistant Professor	B.E (ECE)	M.E (Communication Systems)	-	20-12-1991	4	-	-	08-04-2019	15600+AGP 5400
	4	Mr.S.Hari	Assistant Professor	B.E (ECE)	M.E (EST)	-	05-06-1994	2	-	-	04-01-2021	15600+AGP 5400
<b>M.E</b> Communication Engineering	1	Dr.K.Vijila Rani	Professor	B.E (ECE)	M.E (Digital Electronics)	Ph.D	10-06-1994	3	-	-	01-08-2020	37400+AGP 8700
	2	Ms.J.V.Thirupthika	Assistant Professor	B.E (ECE)	M.E ( Applied Electronics )	-	07-10-1994	6	-	-	01-09-2017	15600+ AGP 5400
	3	Mr. Y. Vijaya Prasad	Assistant Professor	B.E (ECE)	M.E (Communication systems)	-	10-05-1971	4	-	-	04-03-2019	15600+ AGP 5400
	4	Mr.L.Karthick Vijaya Raja	Assistant Professor	B.E (ECE)	M.E (Control and Instrumentation Engineering)	-	21-01-1986	10	-	-	06-02-2013	15600+ AGP 5400
<b>M.E</b> Power System Engineering	1	Ms.P.Sreeja	Assistant Professor	B.E (EEE)	M.E (PSE)	-	13-07-1997	3	-	-	01-09-2020	15600+AGP 5400
	2	Mrs.M.Soniya	Assistant Professor	B.E (EEE)	M.E (Embedded System Tech.)	-	15-06-1996	1	-	-	09-03-2022	15600+AGP 5400
	3	Mr.C.P.Bruce	Assistant Professor	B.E (EEE)	M.E (PSE)	-	05-09-1996	-	-	-	02-03-2023	15600+AGP 5400
	4	Ms.A.G.Rathiga	Assistant Professor	B.E (EEE)	M.E (PSE)	-	23-08-1988	-	-	-	02-02-2023	15600+AGP 5400
<b>M.E</b> Biomedical Engineering	1	Ms.T.Merlin Leo	Assistant Professor	B.E (ECE)	M.E (Communication Systems)	-	27-03-1975	20	-	-	20-11-2018	15600+AGP 5400
	2	Mr.D.Ajith Kumar	Assistant Professor	B.E (BM)	M.E (Nano Science & Technology)	-	18-06-1986	10	-	-	11-02-2013	15600+AGP 5400

	3	Ms.T.Jilly Arasu	Assistant Professor	B.E (BM)	M.E (Bio Medical Instrumentation)	-	09-04-1989	6	-	-	09-10-2017	15600+AGP 5400
	4	Ms.D.Abiya	Assistant Professor	B.E (BM)	M.E (Bio Medical Instrumentation)	-	01-05-1995	4	-	-	02-12-2019	15600+AGP 5400
<b>M.E</b> Structural Engineering	1	Mrs.D.Sheeba	Assistant Professor	B.E (Civil)	M.E (Structural Engg.)	-	17-05-1987	9	-	-	02-07-2014	15600+AGP 5400
	2	Mrs.P.M.Lovely	Assistant Professor	B.E (Civil)	M.E (Structural Engg.)	-	03-06-1981	4	-	-	01-02-2019	15600+AGP 5400
	3	Ms.T.R.Divya	Assistant Professor	B.E (Civil)	M.E (Structural Engg.)	-	12-12-1997	1	-	-	03-01-2022	15600+AGP 5400
<b>M.Tech</b> Biotech	1	Dr.L.P.Merlin Rajesh Lal	Professor	B.Tech (BT)	M.Tech (BT)	Ph.D (BT)	05-11-1984	12	-	-	02-08-2017	37400+AGP 8700
	2	Mrs.B.S.Dhanya	Assistant Professor	B.Sc (Biochemistry)	M.Sc (Biochemistry)	M.Tech (BT)	21-08-1987	5	-	-	08-02-2018	15600+AGP 5400
	3	Mrs.M.Baby Jenitta	Assistant Professor	B.Tech (BT)	M.Tech (BT)	-	03-03-1992	3	-	-	03-02-2020	15600+AGP 5400
<b>M.Tech</b> Nano Science and Technology	1	Dr .Madonna Shalma	Assistant Professor	B.Tech (BT)	M.Tech (BT)	Ph,D	03-03-1990	8	-	-	09-10-2017	15600+AGP 5400
	2	Mr.Amith Rajkumar.R	Assistant Professor	B.Tech (BM)	M.Tech (NST)	-	22-04-1985	7	-	-	25-08-2016	15600+AGP 5400
	3	Ms.A.Anusha	Assistant Professor	B.Tech (BT)	M.Tech (BT)	-	24-01-1995	5	-	-	04-07-2018	15600+AGP 5400
<b>M.E</b> Computer Science and Engineering	1	Ms.T.Mary Daphne	Associate Professor	B.E (CSE)	M.E (CSE)	-	21-02-1981	17	-	-	01-02-2006	15600+AGP 5400
	2	Mrs.D.K.Kalaivani	Associate Professor	B.E. (EEE)	M.E (CSE)	-	12-02-1980	14	-	-	01-06-2009	15600+AGP 5400
	3	Ms.N.Siva Priya	Assistant Professor	B.E (CSE)	M.E (CSE)	-	15-05-1991	7	-	-	24-08-2016	15600+AGP 5400
<b>M.E</b> CAD / CAM	1	Mr.S.Jothi Basu	Associate Professor	B.E (Mech.)	M.E (CAD/CAM)	-	10-05-1981	17	-	-	03-08-2015	15600+AGP 5400
	2	Mr.N.Mohana Sundaram	Associate Professor	B.E (Mechanical)	M.E (CAD/CAM)	-	05-06-1970	17	-	-	02-07-2014	15600+AGP 5400
	3	Mr.S.Sreejan	Assistant Professor	B.E (Mechanical)	M.E (Manufacturing Engineering)	-	31-05-1985	10	-	-	16-07-2013	15600+AGP 5400

<b>M.C.A</b>	1.	Dr.V.Resmi	Professor	B.Sc Physics	M.C.A Computer Application	M.Phil	16-04-1975	22	-	-	03-09-2018	37400+AGP 8700
	2.	Mr.T.Vijayakumar	Assistant Professor	B.A (History)	M.C.A Computer Application	-	07-06-1977	9	-	-	15-05-2023	15600+AGP 5400
	3.	Mr. L. Panneer Dhas	Assistant Professor	B.Sc (CS)	M.Sc (CS)	M.Tech (IT)	21-07-1977	15	-	-	01-07-2017	15600+AGP 5400
	4.	Mr.C.A.Sunil Kumar	Assistant Professor	B.Sc Physics	M.C.A Computer Application	-	27-11-1981	14	-	-	05-08-2009	15600+AGP 5400
	5.	Mrs.G.Geetha	Assistant Professor	B.Sc Maths	M.C.A Computer Application	-	22-05-1984	13	-	-	15-07-2010	15600+AGP 5400
	6.	Mr.L.Rajalingam	Assistant Professor	BCA Computer Application	M.C.A Computer Application	-	20-04-1978	14	-	-	10-04-2015	15600+AGP 5400
	7.	Mrs.P.Priya	Assistant Professor	B.C.A Computer Application	M.C.A Computer Application	M.E (SE)	01-03-1977	9	-	-	01-07-2014	15600+AGP 5400
	8.	Mr.J.Krishna Kumar	Assistant Professor	B.Sc (CS)	M.C.A Computer Application	-	02-09-1982	5	-	-	02-07-2018	15600+AGP 5400
	9.	Mrs.T.Lerena Vincy	Assistant Professor	B.C.A Computer Application	M.C.A Computer Application	-	05-05-1995	1	-	-	12-10-2022	15600+AGP 5400
<b>M.B.A</b>	1.	Mr.K.Venkadesh	Assistant Professor	B.A (Sociology)	M.B.A Finance & Marketing	-	10-05-1982	16	-	-	02-07-2007	15600+AGP 5400
	2.	Mr.Kannan.S	Assistant Professor	B.A (History)	M.B.A Human resources & Marketing	-	27-05-1988	12	-	-	29-01-2011	15600+AGP 5400
	3.	Ms.S.Monisha	Assistant Professor	B.Tech (IT)	M.B.A	-	4-06-1993	6	-	-	19-10-2017	15600+AGP 5400
	4.	Ms.T.V.Mamtha	Assistant Professor	B.Tech (IT)	M.B.A	-	31-10-1996	2	-	-	04-01-2021	15600+AGP 5400
	5.	Mrs.K.Mary Asha	Assistant Professor	B.B.A (Business Administration)	M.B.A	M.Phil	13-07-1986	1	-	-	11-05-2022	15600+AGP 5400
	6.	Ms.D.Sterlin Jeniba	Assistant Professor	B.Sc (CS)	M.B.A	-	17-12-1998	1	-	-	20-09-2022	15600+AGP 5400
	7.	Mr.K.B.Mahesh Kumar	Assistant Professor	B.Com (Commerce)	M.B.A	-	15-02-1981	1	-	-	29-09-2022	15600+AGP 5400